

# PLUS PROPERTIES

## YOUR RIGHT CHOICE IN CYPRUS



# WHY CYPRUS?



MEMBER OF THE EUROPEAN UNION



STRATEGIC GEOGRAPHICAL LOCATION



EXCELLENT MEDITERRANEAN WEATHER



ADVANCED MEDICAL CARE



SAFE COUNTRY

# WHAT'S ATTRACTING INVESTORS?



TOURISM



OIL & GAZ



LOW TAX SYSTEM



PERMANENT RESIDENCY PROGRAM



## PERMANENT RESIDENCY

### FAST-TRACK PROCESS

Investment in Real Estate with a minimum value of €300,000 (+VAT)

Fast process (within 3 months)

Granted to: Applicant & Spouse + Parents of the Applicant + Parents of the Spouse + Children up to the age of 25

### SLOW-TRACK PROCESS

Investment in Real Estate for a value less than €300,000 (+VAT)

Longer process (12-18 months)

Granted to: Applicant & Spouse + Dependent Children

# WHY PLUS PROPERTIES?



APARTMENTS OF ALL SIZES & BUDGETS



STRATEGIC LOCATIONS



EXCELLENT QUALITY & HIGH-END FINISHING



#WEBUILDFAST



AFTER-SALES SERVICES



DELIVERY OF TITLE DEEDS

# 63<sup>+</sup>

## PROJECTS

LARNACA - LIMASSOL - NICOSIA - PAPHOS

# 670<sup>+</sup>

## UNITS SOLD

# 8

## OFFICES

LARNACA - LIMASSOL - BEIRUT - DUBAI  
MANAMA - BAGHDAD - PARIS - ATHENS

# HOUSING LOAN SCHEMES TO PLUS PROPERTIES CLIENTS\*

## FOR RESIDENTS IN CYPRUS

Financing up to **80%**

Interest rate starting at **1.8%**

## FOR NON-RESIDENTS IN CYPRUS

Financing up to **60%**

Housing Loans at low interest rates

Period up to 30 years

Loans are applicable for ready and under-construction units.

\*Terms & Conditions Apply

# SOLD OUT PROJECTS



**PLUS 1**  
DROSIA - LARNACA



**PLUS 2**  
MACKENZIE - LARNACA



**PLUS 3**  
NEAPOLIS - LIMASSOL



**PLUS 4**  
NEAPOLIS - LIMASSOL



**PLUS 5**  
DROSIA - LARNACA



**PLUS 7**  
LIVADIA - LARNACA



**PLUS 8**  
GERMASOGEIA - LIMASSOL



**PLUS 9**  
FANEROMENI - LARNACA



**PLUS 10**  
NEW MARINA - LARNACA



**PLUS 11**  
NEW MARINA - LARNACA



**PLUS 12**  
DROSIA - LARNACA



**PLUS 14**  
COLUMBIA - LIMASSOL



**PLUS 15**  
LIVADIA - LARNACA



**PLUS 16**  
LIVADIA - LARNACA



**PLUS 17**  
NEW MARINA - LARNACA

# SOLD OUT PROJECTS



**PLUS 18**  
MACKENZIE - LARNACA



**PLUS 20**  
GERMASOGEIA - LIMASSOL



**PLUS 22**  
NEW MARINA - LARNACA



**PLUS 23**  
NEW MARINA - LARNACA



**PLUS 24**  
NEAPOLIS - LIMASSOL



**PLUS 25**  
MESA GEITONIA - LIMASSOL



**PLUS 26**  
STROVOLOS - NICOSIA



**PLUS 27**  
NEW MARINA - LARNACA



**PLUS 28**  
NEW MARINA - LARNACA



**PLUS 30**  
LIVADIA - LARNACA



**PLUS 31**  
LIVADIA - LARNACA



**PLUS 32**  
AGIOS ATHANASIOS - LIMASSOL



**PLUS 35**  
LIVADIA - LARNACA



**PLUS 40**  
MESA GEITONIA - LIMASSOL



**PLUS 41**  
LIVADIA - LARNACA

# SOLD OUT PROJECTS



**PLUS 42**  
LIVADIA - LARNACA



**PLUS 43**  
LIVADIA - LARNACA



**PLUS 44**  
LIVADIA - LARNACA



**PLUS 45**  
KAMARES - LARNACA



**PLUS 52**  
LIVADIA - LARNACA



**PLUS 53**  
MESA GEITONIA - LIMASSOL



**PLUS 55**  
LIVADIA - LARNACA



## WHY LARNACA?

FAST GROWING CITY

STRATEGIC LOCATION, PROXIMITY TO ALL CITIES

CYPRUS MAIN INTERNATIONAL AIRPORT

BIGGEST MARINA & PORT

AFFORDABLE PRICES

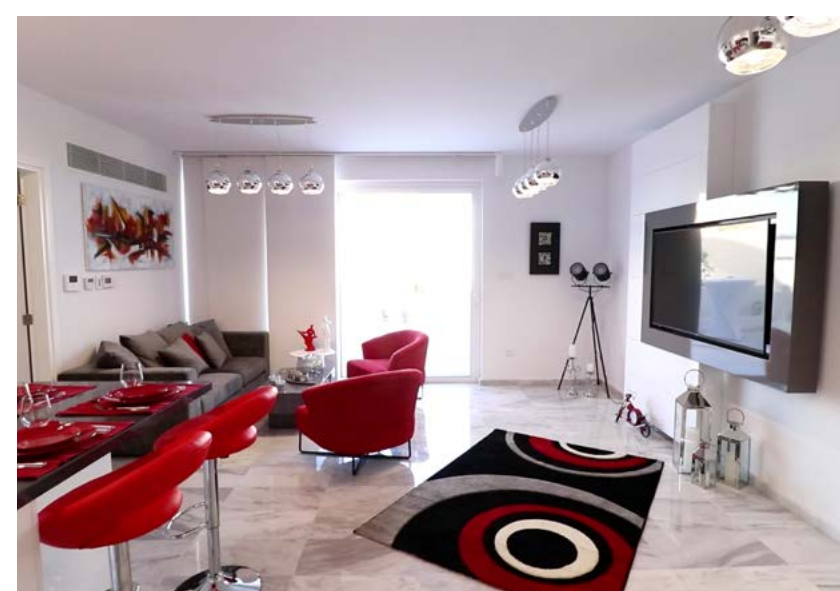




# MACKENZIE AREA

Known as the Carré D'or of Larnaca  
One of the Most Important Tourist Areas in Larnaca  
Area full of Restaurants and Cafes  
Blue Flag Beaches  
Few Minutes from Larnaca International Airport

LARNACA



READY TO MOVE IN

**THE PEARL**  
by GC

**PLUS 6**  
MACKENZIE - LARNACA

Iconic Building | Common Swimming Pool | Sea View  
Underground and Covered Parking | 80 Meters from Mackenzie Beach



[CLICK HERE FOR DETAILS](#)



[CLICK HERE FOR LOCATION](#)

LARNACA



READY TO MOVE IN



**PLUS 19**  
MACKENZIE - LARNACA

1, 2 & 3 Bedroom Apartments | Penthouse Apartments with Roof Terrace  
Sea View | Facing a Public Garden | 80 Meters from Mackenzie Beach



[CLICK HERE FOR DETAILS](#)



[CLICK HERE FOR LOCATION](#)

LARNACA



UNDER-CONSTRUCTION

**ROY TERRACES**  
by GC

**PLUS 21**  
MACKENZIE - LARNACA

1, 2 & 3 Bedroom Apartments | Panoramic Sea View | Common Pool & Gym  
Underground & Covered Parking | 80 Meters from Mackenzie Beach



[CLICK HERE FOR DETAILS](#)



[CLICK HERE FOR LOCATION](#)

LARNACA



UNDER-CONSTRUCTION



**PLUS 37**  
MACKENZIE - LARNACA

1, 2, 3 & 4 Bedroom Apartments | Penthouse Apartments with Roof Terrace | Sea View  
100 Meters from Mackenzie Beach | Walking Distance to Restaurants & Cafes



[CLICK HERE FOR DETAILS](#)



[CLICK HERE FOR LOCATION](#)

LARNACA



COMING SOON

# PLUS 38

by GC

MACKENZIE - LARNACA

1, 2 & 3 Bedroom Apartments | Penthouse Apartments with Roof Terrace  
100 Meters from Mackenzie Beach | Walking Distance to Restaurants & Cafes



[CLICK HERE FOR DETAILS](#)



[CLICK HERE FOR LOCATION](#)

LARNACA



UNDER-CONSTRUCTION

**PLUS 49**  
by GC

MACKENZIE - LARNACA

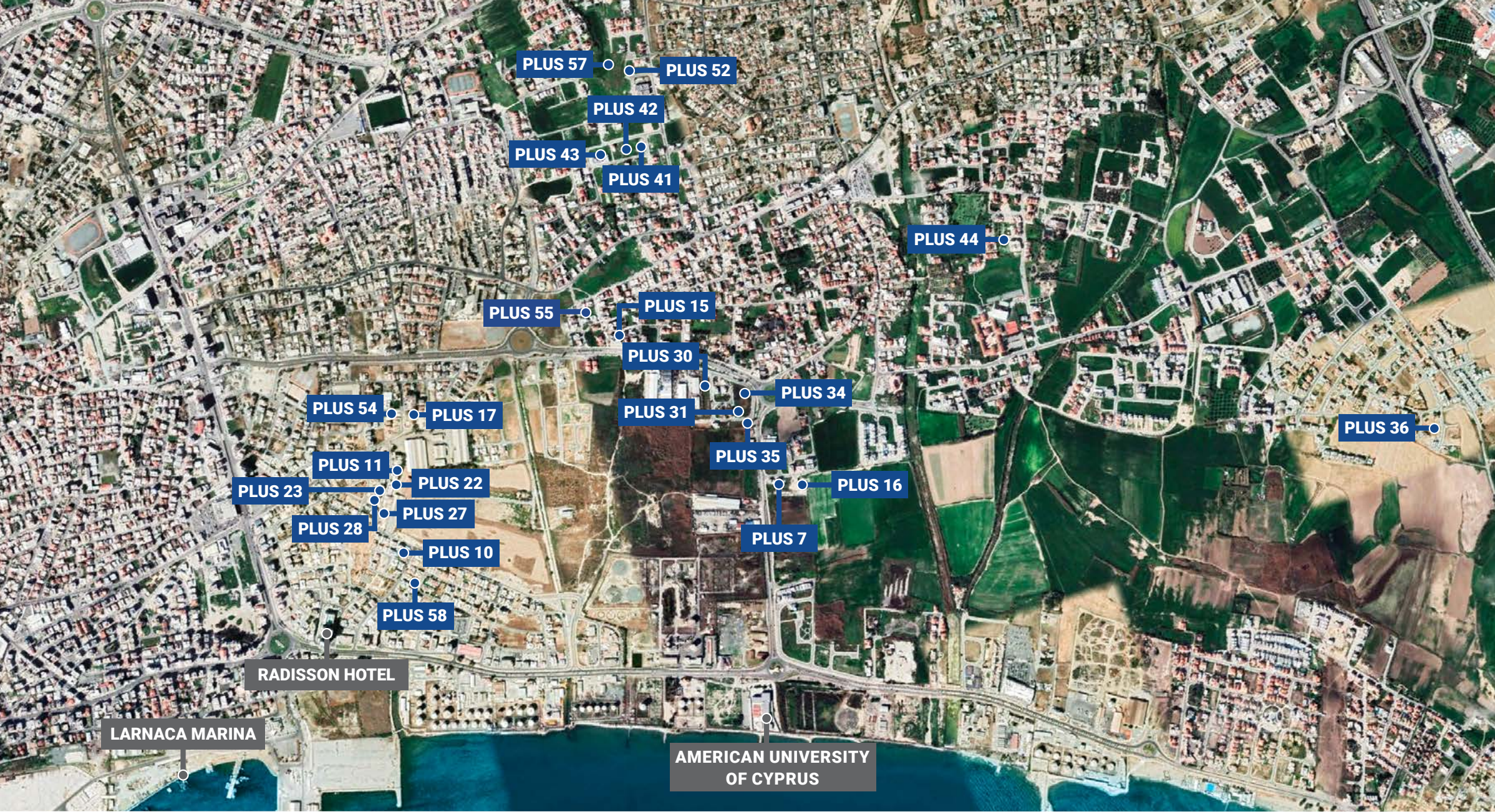
1 Bedroom Apartments | Penthouse Apartments with Roof Terrace  
100 Meters from Mackenzie Beach | Walking Distance to Restaurants & Cafes



[CLICK HERE FOR DETAILS](#)



[CLICK HERE FOR LOCATION](#)



# NEW MARINA & LIVADIA AREA

Fastest Developing Area in Larnaca with Foreign Investments  
Biggest Marina & Port in Cyprus  
New American University of Cyprus  
Opportunities with High Return on Investment



LARNACA



UNDER-CONSTRUCTION

**LIVADIA  
GARDEN 3**  
by GC

**PLUS 36**  
LIVADIA - LARNACA

3 Bedroom Villas | Optional Pool or Roof Terrace | Facing a Public Garden  
Luxurious Neighborhood | 2 Minutes From the Beach



[CLICK HERE  
FOR DETAILS](#)



[CLICK HERE  
FOR LOCATION](#)

LARNACA



COMING SOON

# PLUS 54

by GC

NEW MARINA - LARNACA

2&3 Bedroom Apartments | Penthouse Apartments with Roof Terrace,  
700 Meters From the New Marina | 2 Minutes From Larnaca City Center | Facing a Public Garden



[CLICK HERE FOR DETAILS](#)



[CLICK HERE FOR LOCATION](#)

LARNACA



COMING SOON

**TAMARA**  
gardens <sup>2</sup> in GC

**PLUS 57**  
LIVADIA - LARNACA

Complex of 5 Blocks | 1, 2 & 3 Bedroom Apartments | Ground Floor Apartments with Private Gardens | Penthouses with Roof Terraces | Few Minutes from the New Marina & Port



[CLICK HERE FOR DETAILS](#)



[CLICK HERE FOR LOCATION](#)

LARNACA



COMING SOON

## PLUS 58 by GC

NEW MARINA - LARNACA

1, 2 & 3 Bedroom Apartments | Penthouses with Roof Terraces |  
400 meters from the New Marina | 500 meters from the Beach



[CLICK HERE  
FOR DETAILS](#)



[CLICK HERE  
FOR LOCATION](#)



COMING SOON

# PLUS 59

by GC

NEW MALL AREA - LARNACA

Located in the heart of Larnaca | Includes retail shops and offices |  
Underground & visitors parking available | Easy access to highways leading to Limassol, Nicosia and Famagusta



[CLICK HERE FOR DETAILS](#)



[CLICK HERE FOR LOCATION](#)



# NEW MALL AREA

Residential Area

Ideal for Families

Affordable Prices

First mall in Larnaca: Metropolis Mall

Hospitals, Educational Institutions and Local Amenities



COMING SOON

**PLUS 46**  
by GC

ARADIPPOU - LARNACA

1, 2, 3 & 5 Bedroom Apartments | Penthouse Apartments with Roof Terrace  
Strategic Location | Easy Access to the Highway | Close to Local Amenities



[CLICK HERE FOR DETAILS](#)



[CLICK HERE FOR LOCATION](#)



UNDER-CONSTRUCTION

PLUS 47  
by GC  
VERGINA - LARNACA

1, 2 & 3 Bedroom Apartments | Penthouse Apartments with Roof Terrace  
3 Minutes From Metropolis Mall | 3 Minutes From Larnaca General Hospital



CLICK HERE FOR DETAILS



CLICK HERE FOR LOCATION





## UNDER-CONSTRUCTION

**PLUS 48**  
by GC  
VERGINA - LARNACA

1, 2 & 3 Bedroom Apartments | Penthouse Apartments with Roof Terrace  
3 Minutes From Metropolis Mall | 3 Minutes From Larnaca General Hospital



[CLICK HERE FOR DETAILS](#)



[CLICK HERE FOR LOCATION](#)

12/2021

PLUS 50



Ermou Street

Finikoudes Beach

# LARNACA DOWNTOWN AREA

Prime Touristic Area  
Famous Neighborhood  
Variety of Boutiques, Restaurants & Cafes

LARNACA



COMING SOON

## PLUS 50 by GC

DOWNTOWN - LARNACA

2 Bedroom Apartments | Penthouse Apartments with Roof Garden,  
100 Meters From Ermou Street | 5 Minutes From Larnaca Airport



[CLICK HERE  
FOR DETAILS](#)



[CLICK HERE  
FOR LOCATION](#)



## WHY LIMASSOL?

- ENERGETIC & BOOMING CITY
- LARGE TOURISTIC AREAS
- HIGH-END HOTELS, RESORTS & BOUTIQUES
- INDUSTRIAL PORT & TRADE ROUTE
- LARGEST CASINO IN EUROPE
- INTERNATIONAL TECH & FINANCIAL SERVICES COMPANIES



PLUS 29

PLUS 32

PLUS 60

PLUS 53

PLUS 14

PLUS 40

PLUS 25

PLUS 20

PLUS 4

PLUS 8

PLUS 24

PLUS 3

PLUS 39

LIMASSOL



UNDER-CONSTRUCTION

# PLUS 29

by GC

PAREKKLISIA - LIMASSOL

1, 2 & 3 Bedroom Apartments | Penthouse Apartments with Roof Terrace  
3 Minutes From the Highway | 6 Minutes From the Beach



[CLICK HERE FOR DETAILS](#)



[CLICK HERE FOR LOCATION](#)

LIMASSOL



UNDER-CONSTRUCTION

CASINO  
RESIDENCE  
by GC

PLUS 39  
ZAKAKI - LIMASSOL

1, 2 & 3 Bedroom Apartments | Penthouse Apartments with Roof Terrace  
4 Minutes From My Mall 5 Minutes From the New Casino | 5 Minutes From the Beach



CLICK HERE  
FOR DETAILS



CLICK HERE  
FOR LOCATION



PLUS 53  
BY GC

COMING SOON

# PLUS 53

by GC

MESA GEITONIA - LIMASSOL

2 & 3 Bedroom Apartments | Penthouse Apartments with Roof Terrace | Luxurious Neighborhood  
5 Minutes From the Beach | Close to Local Amenities

 [CLICK HERE FOR LOCATION](#)





COMING SOON

**PLUS 60**  
by GC

AGIOS TYCHONAS - LIMASSOL

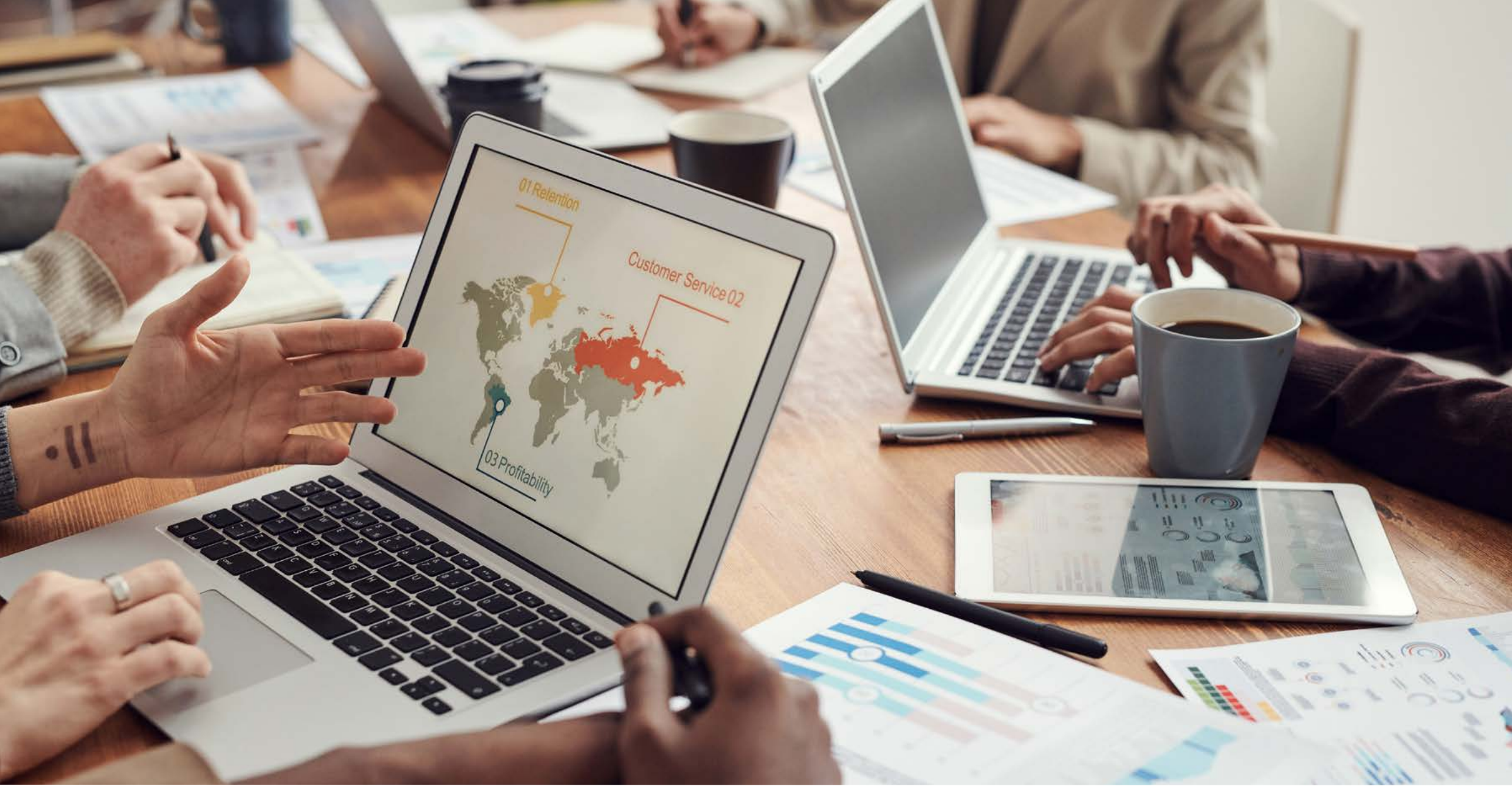
5 Luxurious Villas | 4-Bedroom Villas | Private Gardens | Roof Terraces | 3 minutes from the Beach |  
3 minutes from Amathus, Mediterranean & Four Seasons Hotels



[CLICK HERE FOR DETAILS](#)

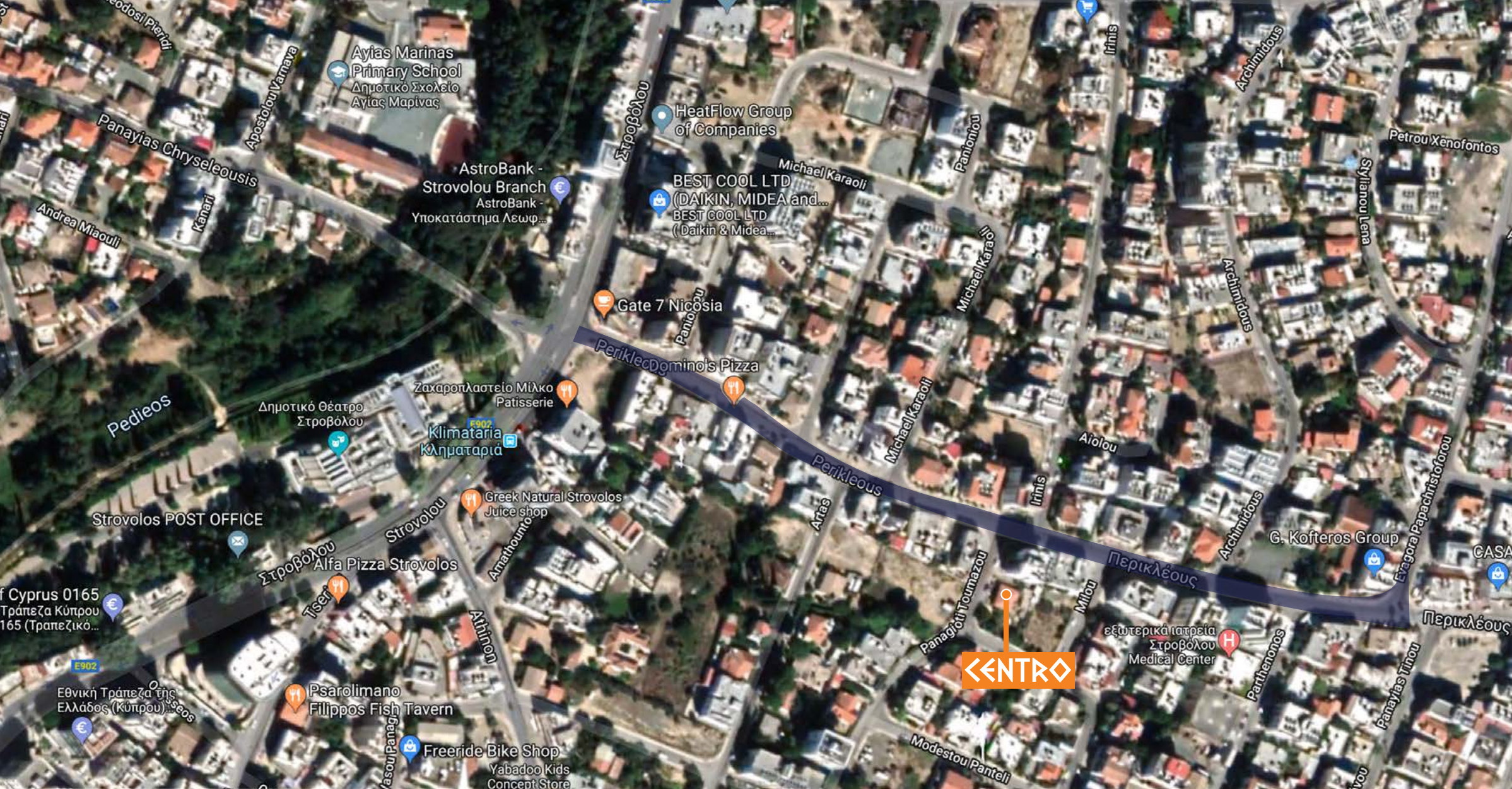


[CLICK HERE FOR LOCATION](#)

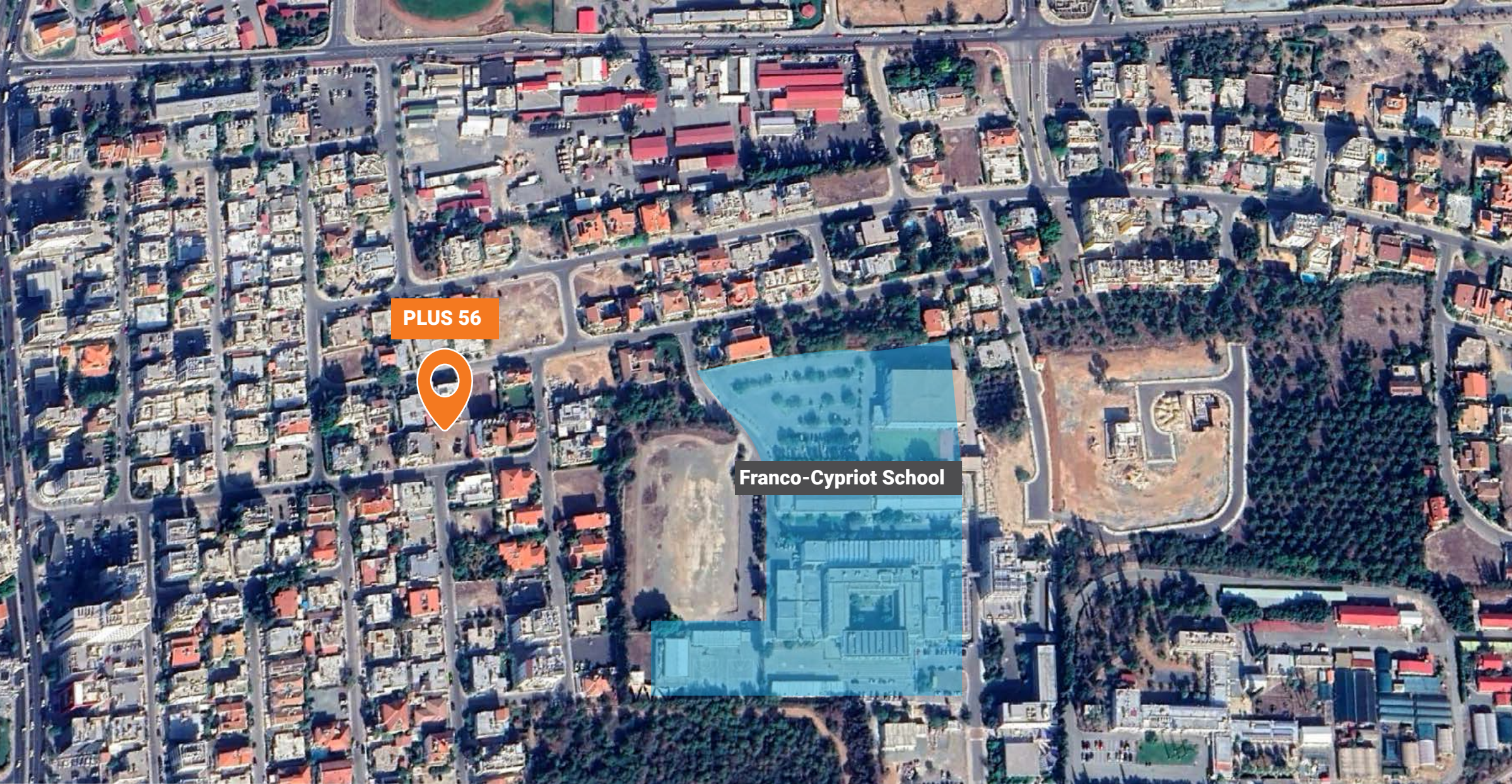


# WHY NICOSIA?

- CAPITAL OF THE ISLAND
- BUSINESS HUB
- HIGH EDUCATION INSTITUTIONS
- THRIVING OLD CITY CENTER
- CITY OF CULTURE & HISTORY



# STROVOLOS - NICOSIA



# PLATY - NICOSIA



**COMING SOON**

**PLUS 56**  
PLATY - NICOSIA

2 & 3 Bedroom Apartments | Spacious Apartments With Large Balconies  
Penthouse Apartments With Large Terrace | Strategic Location



[CLICK HERE FOR DETAILS](#)

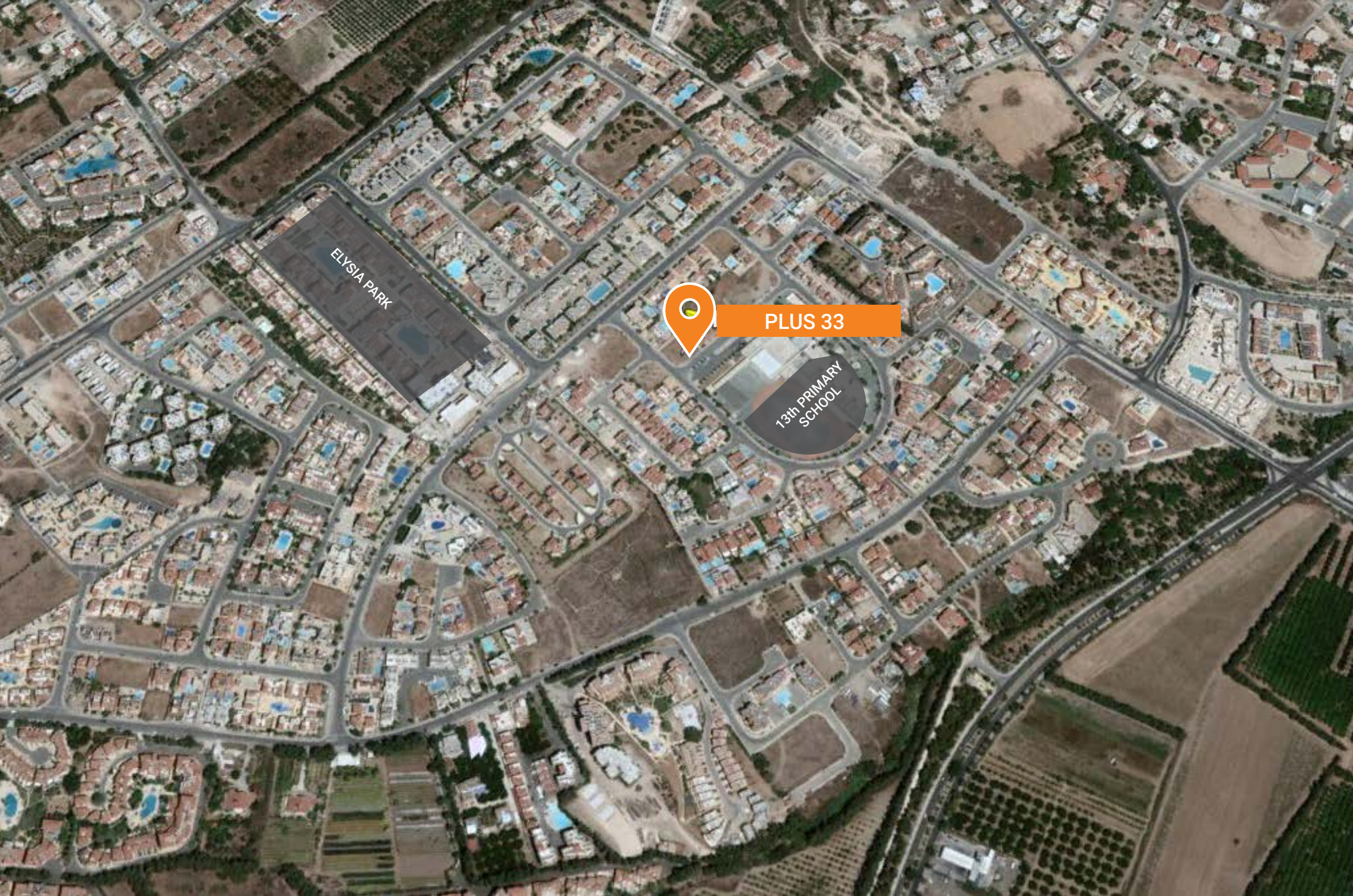


[CLICK HERE FOR LOCATION](#)

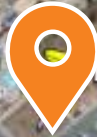


## WHY PAPHOS?

FAST DEVELOPING AREA  
SECOND INTERNATIONAL AIRPORT IN CYPRUS  
STUNNING LANDSCAPES  
CAPITAL OF CULTURE & HISTORY



ELYSIA PARK



PLUS 33

13th PRIMARY  
SCHOOL



COMING SOON

**PLUS 33**  
by GC

UNIVERSAL - PAPHOS

2-Bedroom Apartments | Penthouse Apartments with Large Terrace |  
Facing Universal Elementary School | 600 Meters From the Beach



[CLICK HERE  
FOR DETAILS](#)



[CLICK HERE  
FOR LOCATION](#)





**Cyprus Larnaca: +357 24 64 24 64**  
**Limassol : +357 77 77 01 03**  
**Lebanon : +961 1 900 000**  
**UAE : +971 52 711 05 05**  
**Bahrain : +973 394 777 27**  
**Greece : +30 216 0014 672**



[info@pluspropertiescyprus.com](mailto:info@pluspropertiescyprus.com)  
[www.pluspropertiescyprus.com](http://www.pluspropertiescyprus.com)

The used pictures are for illustration purpose only.